

# What We Can Do to Reverse Biodiversity Loss

## 1. Background : We need to reverse Biodiversity Loss

Wherever we live, we are all ultimately connected to the web of life that covers the entire planet. (the message of Ahmed Djoghlaif Executive Secretary of the Convention on Biological Diversity, 2011)

- 2010 The Aichi Biodiversity Targets (COP10)
- 2012 The National Biodiversity Strategy of Japan



## 2. Efforts and Assessment : According to JBO3 (Japan Biodiversity Outlook 3)

The 4 crises of Japan's biodiversity

- are still enormously affecting the loss of biodiversity.
- are decreasing ecosystem services.

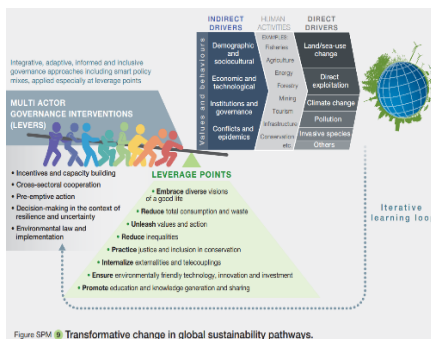
Efforts made so far

- have slowed down the speed of the loss of biodiversity.
- have not begun to recover the loss of biodiversity yet.

In addition to the solutions for **direct drivers**,

a transformative change through solutions to **indirect drivers is necessary**.

→ It is significant that the **“Leverage Points”**, which make solutions most effective, should be focused on.



### LEVERAGE POINT 8 : Promote education and knowledge generation and sharing

- Ex.
- Children's experience in nature
  - Involvement in the interactions between generations and provision of such experience
  - Passing down and utilizing traditional knowledge through local experiences
  - Environment education and civic education, etc.

JBO3 pointed out

There is **no perfect solution** for Transformative change, but **education is one of the solutions** with the expectation of a wide range of effects.

This is what we, high school students, can take part in !

## 3. Our action : Create KAMISHIBAI and spread it all over the world



### Outline of our KAMISHIBAI

- The main character is “Reef,” the coral.
- Reef lived peacefully with her friends in the ocean but gradually turned pale and died at last.
- What brought about death to Reef were results of human activities such as rising sea temperatures and seawater contamination with soil.

### Merits of KAMISHIBAI

- Messages can be delivered **effectively** through illustrations.
- Messages can be delivered to **more people at a time**.
- Messages can be **understood even by younger children**.
- Older children's reading to younger children leads to an **understanding of people in more generations**.

## 4. The future we have to create : Living in Harmony with Nature

We all need to understand Biodiversity Loss.

We all need to consider and take actions to reverse Biodiversity Loss.

**Let's ensure “Living in Harmony with Nature” for the present and future generations around the world.**

## 5. 参考文献

・環境省「生物多様性及び生態系サービスの総合評価 2021」(<https://www.env.go.jp/press/files/jp/115844.pdf>) ・愛知目標パンフレット「Living in harmony with nature -- The National Biodiversity Strategy of Japan 2012-2020--」([https://www.biodic.go.jp/biodiversity/about/library/nbsap2012-2020\\_pamphlet.html](https://www.biodic.go.jp/biodiversity/about/library/nbsap2012-2020_pamphlet.html)) ・「The global assessment report on BIODIVERSITY AND ECOSYSTEM SERVICES SUMMARY FOR POLICYMAKERS」 ipbes(<https://ipbes.net/global-assessment>) すべて最終閲覧は2021年11月5日