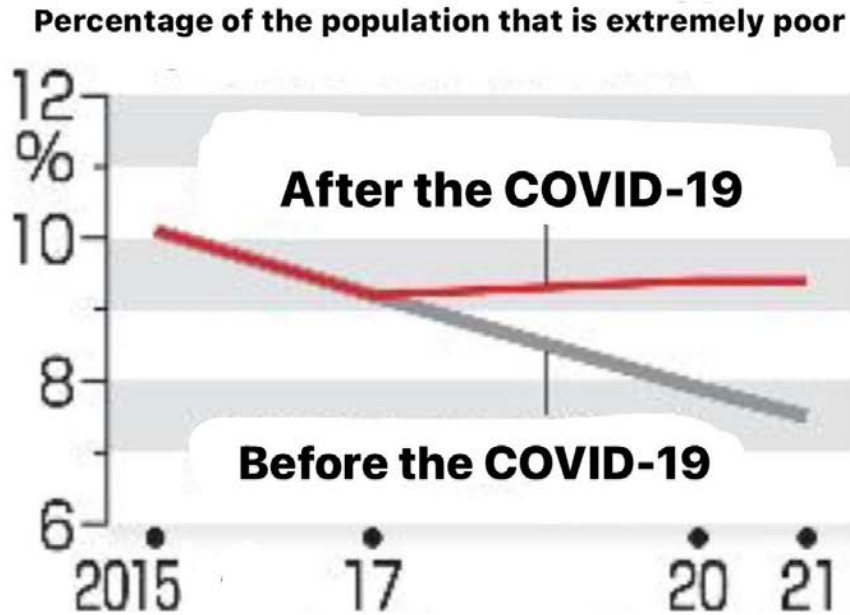


# *Raising awareness of donation among high school students*

Okayama Ichinomiya high school



# Now



## Outbreak of COVID-19



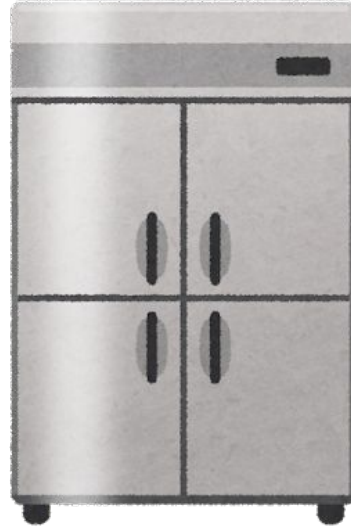
## Increasing poverty!!!

# In Okayama

## KITANAGASE Community Fridge



# How Community Fridges Work



**“food presenter”**

**community fridges**

**families in need  
of assistance**

# Making Community Fridges Sustainable

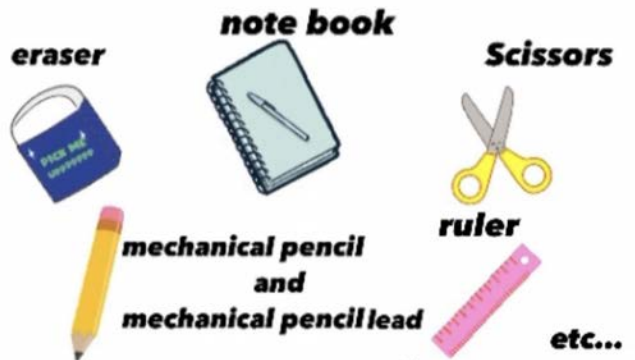


**We need people to donate for years to come.**

**Need to raise awareness of donation among high school students.**

**Increase donation activities at schools.**

# Donate Stationery!! at Ichinomiya High



**Donate stationery!**

社会1

～文房具を寄付しよう!～

**Date :** 2021.10.21～2021.11.05

**place :** 一宮高校の購買の寄付ボックス

**destination**  
**Donation** **community fridge**

## Purpose

- To cultivate the awareness towards poverty among high school students for a poverty free future

# Why did we choose stationeries?

1. For the families that have children.
2. For an ease donation high school students.





# Results of a survey

A lot of donations were collected!





# Conclusion

- **Conducted a survey to find out if donation awareness has increased.**



- **We would like to continue this kind of initiative and spread it to other high schools.**