



# Sapporo **Melting** Snow Festival

What can we do to protect the Earth  
from global warming in the future??

Sapporo Nihon University High School

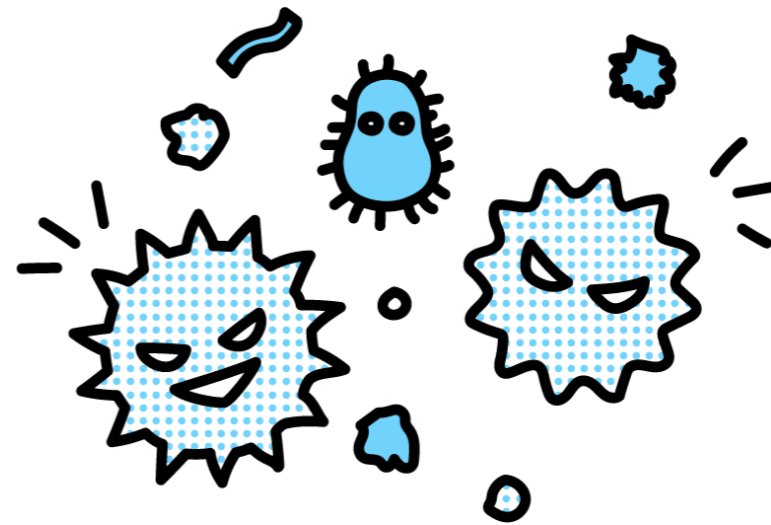
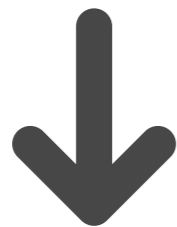
2021~2022

Sapporo Snow Festival canceled  
for the second year in a row .

The cancellation of this major event in Hokkaido resulted in the loss of 50 billion yen in economic benefits for Hokkaido.

**This was a huge loss for Hokkaido.**

Cause : COVID-19



**If COVID-19 ends, Snow Festival can be held again !**

# A news about climate change due to Global Warming

According to the study, temperatures will rise by **4 degrees Celsius** by the end of the 21st century if we continue with the current measures.



Snow does not fall unless the temperature is below 0°C.

The cancellation due to the coronavirus is only temporary, but if the snow stops falling, the Snow Festival will not be able to be held forever !

We decided to investigate more closely .

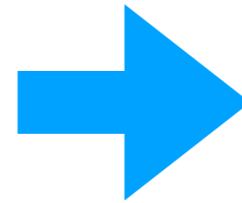
The  
average February temperature in  
Sapporo City



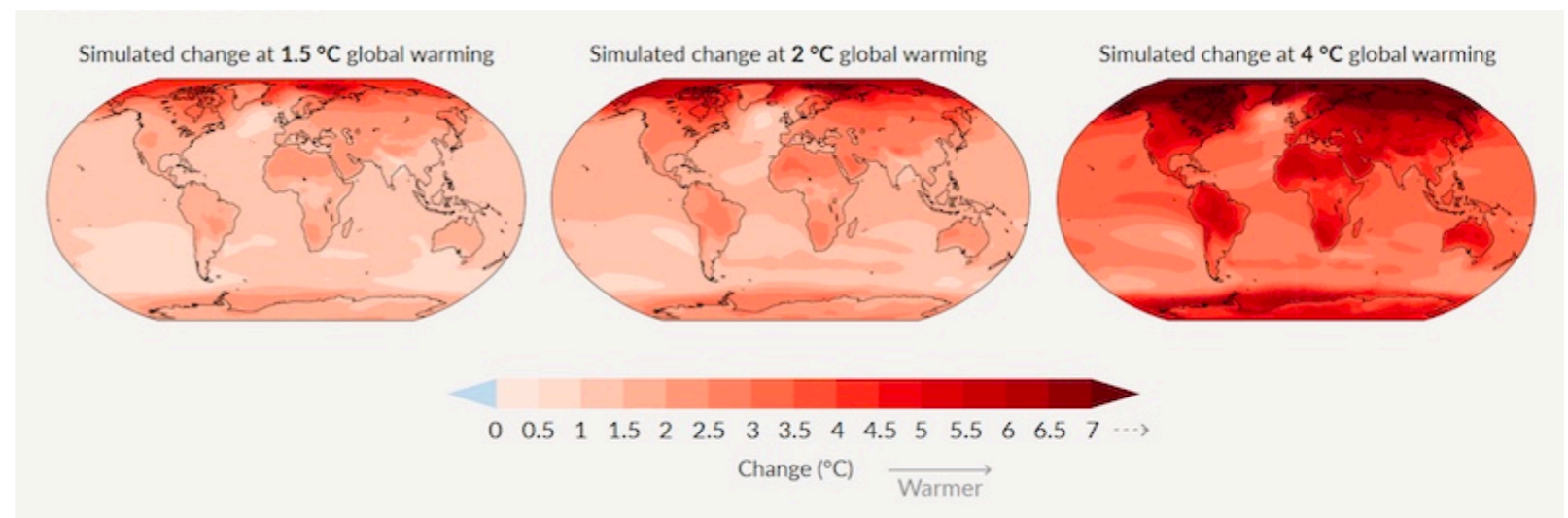
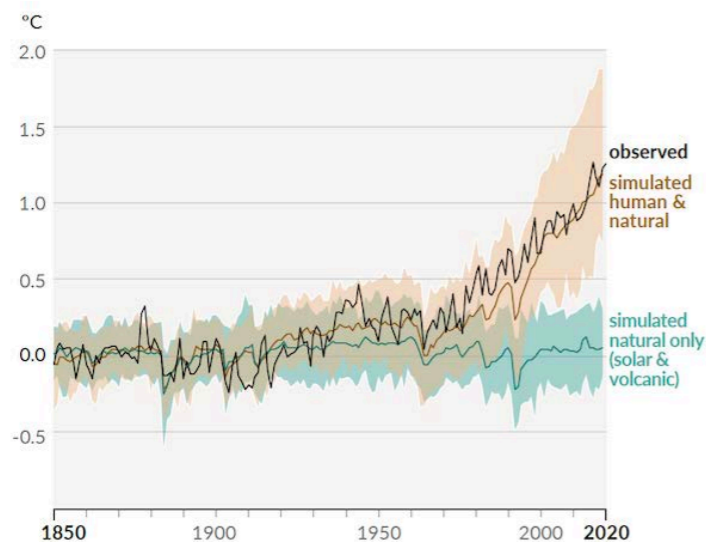
図: 採取雪地と、現在気候・21世紀末の積雪深の比較 ※雪まつりの降雪期間中(1/5~1/27)  
※上記図は、環境省「平成31年度地域適応コンソーシアム北海道・東北地域事業委託業務」において作成されたものです  
※気候シナリオとして、文部科学省「気候変動リスク情報創生プログラムテーマC 気候変動リスク情報の基盤技術開発」において、気象研究所が作成した2kmメッシュのダウンスケーリングデータを使用しています。

Average	-2.7	1.3
Maximum	0.4	4.4
Minimum	-6.2	-2.2

Actually, the accident involving ice sculptures collapsing occurred in 2012 !



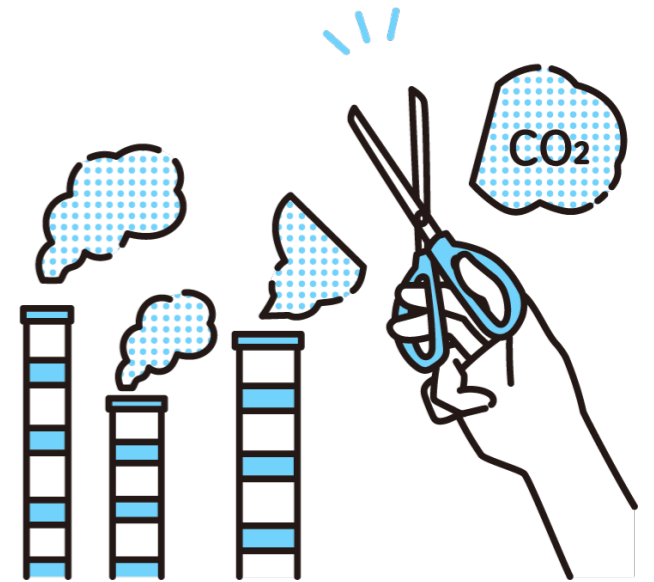
According to the latest projections by the IPCC (United Nations Intergovernmental Panel on Climate Change), the global average temperature rise will reach more than 1.5 degrees Celsius above pre-industrial levels between 2021 and 2040.



# Solution to the problem

Society-wide solution :

- ① Reduce consumption of fossil fuels
- ② Change from gasoline cars to electric vehicles  
( 60% reduction in car emissions )



Things we can do as individuals :

- ① Turn off lights in rooms that no one is using
- ② Unplug devices from power plugs
- ③ Use public transport



**Why don't we organize  
the Sapporo Snow-filled Festival ?**