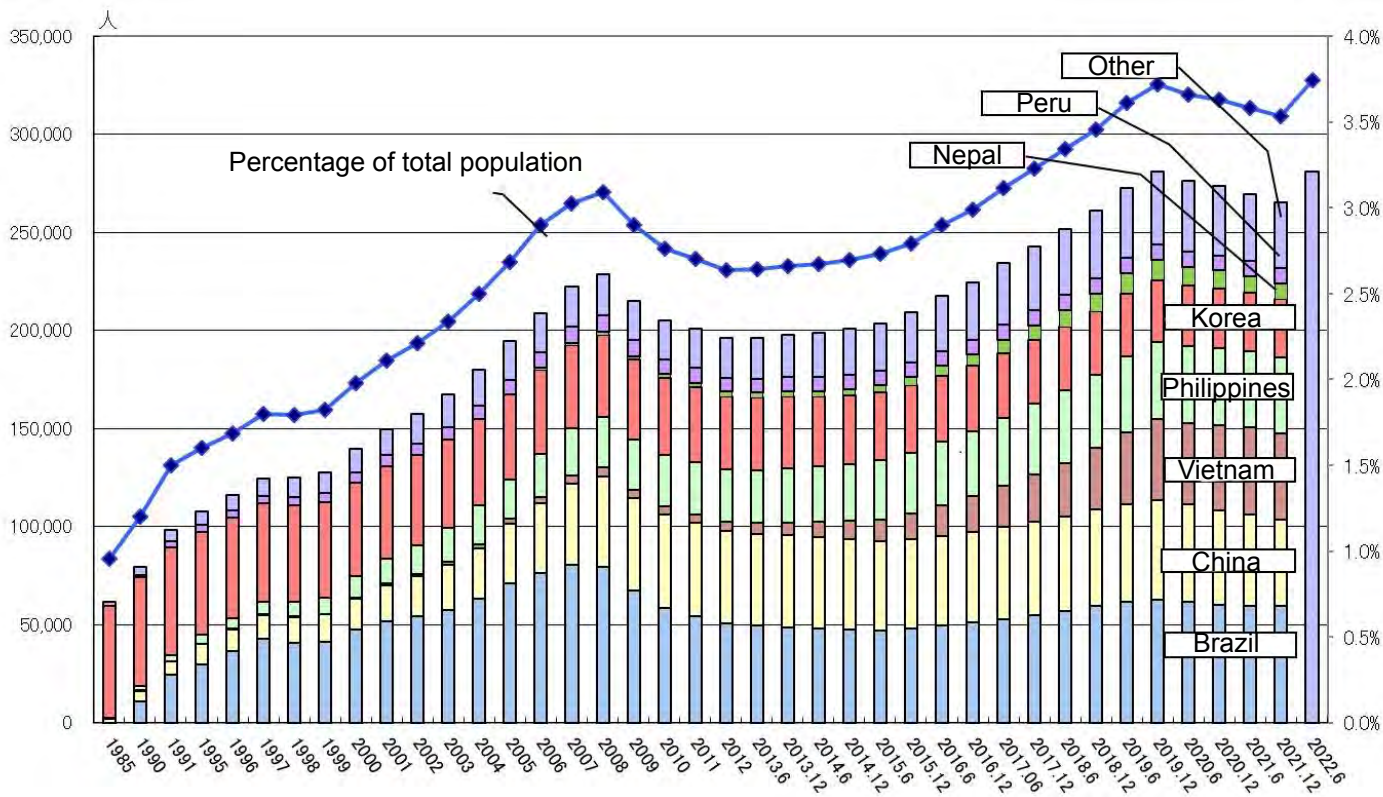


# Moving Forward Together



# Data of foreigners living in Aichi Prefecture




# Quiz held at Toyoake city autumn festival



We held an event to let people know more about foreigners by doing the quiz.

(at the Ukrainian support event)



 だいにちん  
**第2問**  
こっき いる あお きいる  
ウクライナの国旗の色は青と黄色です。  
あお そら いみ きいる いみ  
国旗の青は「空」を意味しますが、黄色はどういう意味？

①ひまわり      ②こむぎ      ③ほし



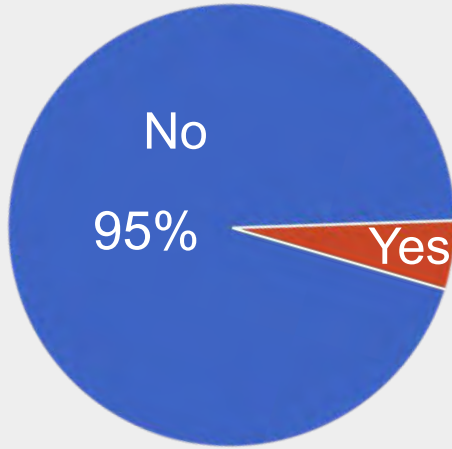
 だいじゅうななちん  
**第17問**  
しま かず なんこ  
フィリピンの島の数は何個でしょう



①約1000個  
②約4500個  
③約7500個

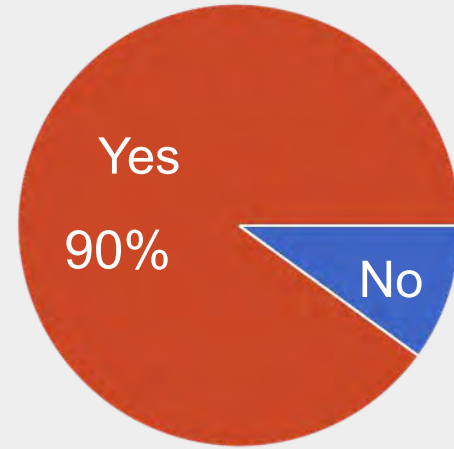
# Survey at the event

Are you confident that you know about the culture of foreign people?



Questions to Japanese

Would you like to participate in an event where you can learn about foreign culture?



When have you had a hard time living in Japan?

Traditions, manners, language and food

Questions to foreigners

# Things we thought while collecting the data

- Many Japanese are not confident in foreign cultures.
- Many agree to hold a cross-cultural exchange event.

→many Japanese want to know about foreign people.

- Foreign people living in Japan are struggling with cultural differences.



Having a cross-cultural exchange event for citizens to understand other cultures will be great!!



# Toyoake world SUGOROKU ! !



7  
 エッフェル塔はこの国に  
 あるでしょう  
 What country is the Eiffel Tower be in?

①   
 ②   
 ③ 


正解したら1マス進む  
 1 trout advances if 1 answer it correctly

 → 

かい  
 1回スキップ  
 Once skip



りんご Apfel  
 Apple malum  
 la pomme mela  
 ↑ Name  
 omena 蘋果  
 स्याउ



# Rules of game

## WOULD SUGOROKU INSTRUCTIONS 説明書

### Firstly

We appreciate you for using  
【WOULD SUGOROKU】.

This game's purpose is learning  
many cultures and strengthen  
cultural exchanges with a Japanese  
and the foreigner.

We're glad if you become  
interested in the other countries  
through this game by all means.

### Contents



### How to play

Decide turns to throw the dice.  
Then move your playing piece  
by the number you throw on  
the dice.

Then continue to play the  
game and the person who  
reaches the goal first will be  
the winner.



### Answer to blue card

- ② 1,380,000,000
- ③ Portuguese
- ③ dough using the wheat flour
- ② Osechi
- ③ 50
- ① Fishing
- ① The U.K.
- ③ Cherry blossom (Sakura)
- ③ Sushi
- ② Seoul
- ③ Won
- ① Hanoi
- ③ 23 times
- ② 2,400km
- ③ about 7,500
- ① France
- ③ Pizza

8

こっかの国花はなんでしょう  
What is the Japanese national flower?

① 

② 

③ 

正解したら1マス進む  
I trout advances if I answer it correctly.



かい  
1回スキップ  
Once skip



## Points of playing game

- Having a cultural exchange by fun
- no differences in position between locals and foreigners





# Target of this game

## Elementary students

- easy and fun for children
- many of them can speak Japanese
- have a wide range of values

