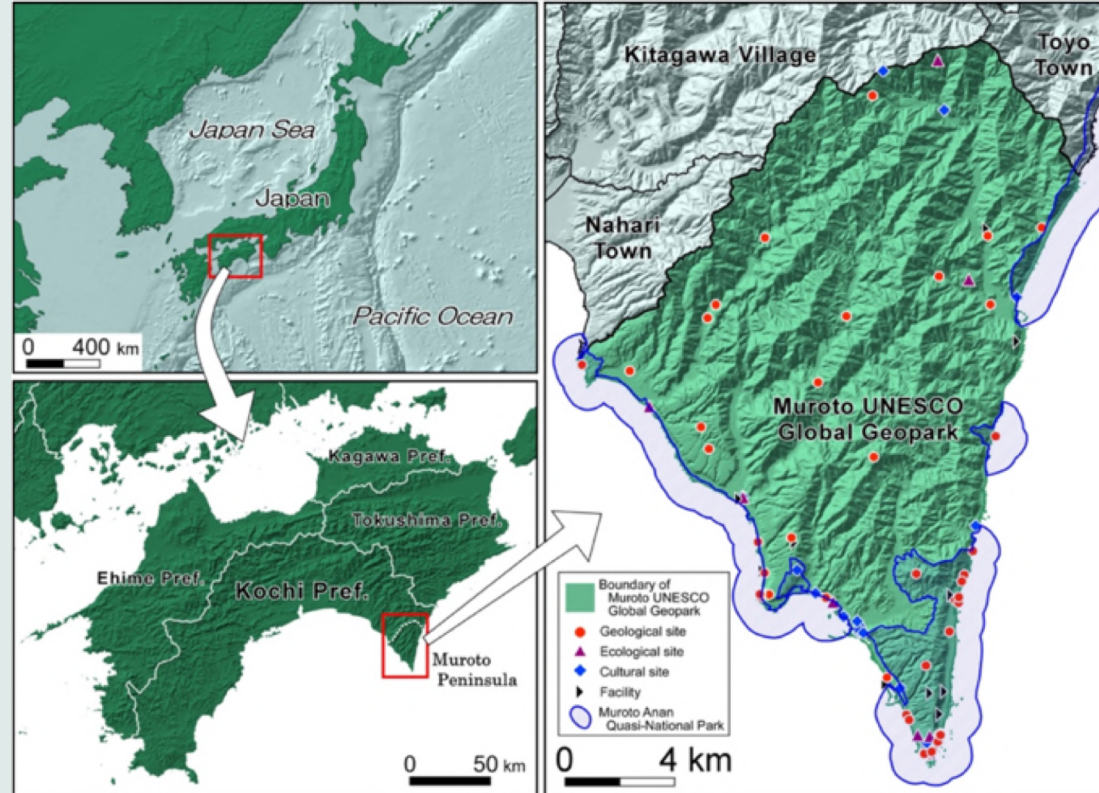


Tourism No One Behind



Location	Shikoku Island, Southeast of Japan
Resource	UNESCO Global Geopark
Vision & AIM	

Achieving tourism no one behind: Muroto's tourism information should be conveyed to everyone over country border, language barrier, and with or without disabilities



SGHH111

Kochi Prefectural Muroto High School



Project 1 Photo Exhibition: Expressing Geopark throughout Our Daily Lives

Conventional tourism promotion tools by Muroto UNESCO Global Geopark:
Beautiful photos or videos of local geological heritage (posters, PR videos, etc)



▶ Not enough to describe “Geopark” which is not about rocks or scenery but also about people lives connecting to local natural environment.

Photo Exhibition (2022 Nov. 1st to Dec. 10th)

2021年度入賞作品

写真展

ファイナダー越しに見る室戸ユネスコ世界ジオパーク

22.11.01 TUE. 12.10 SAT. 09:00 - 17:00

主催：室戸ジオパーク推進協議会
協力：高知県室戸市室戸町立室戸高等学校
〒779-0197 室戸市室戸町室戸1-1-1
info@muroto-geo.jp
0987-227111 ext.102

会場：お問合せ
室戸世界ジオパークセンター

自然と人のつながり
室戸の人の暮らしの根幹には、地域の自然環境があります。この写真展のテーマは「室戸の自然と人の暮らしのつながり」。展示する作品は、第7回室戸ジオパークフォトコンテストの応募作品です。
地元・室戸高校生の撮り下ろし「僕らが見た室戸ジオパーク」も同時開催です。

QRコード

令和4年度第72回
高知県立総合振興局主催
KOCHI ART PROJECTS 2022

unesco
Global Geopark

[AIM] Introducing “real” local lives for visitors
[Theme of photos]
Our days with my friends and family in Muroto’s nature
Our way to interact with local natural environment
▶▶ Describing people’s daily lives in Muroto



Project 2 Guided Tour in Sign Language

Various guided tours and activity programs are available in Muroto UNESCO Global Geopark. However, those tours and programs are not for people with disabilities.

FY2021: Developing guided tour targeting visually impaired persons



FY2022:

- 1) Developing a guided tour in sign language targeting hearing-impaired persons
 - Making a short video of the tour in sign language with captions
- 2) Creating an artwork expressing Geopark messages
 - Conveying messages of Muroto's natural environment for everyone

