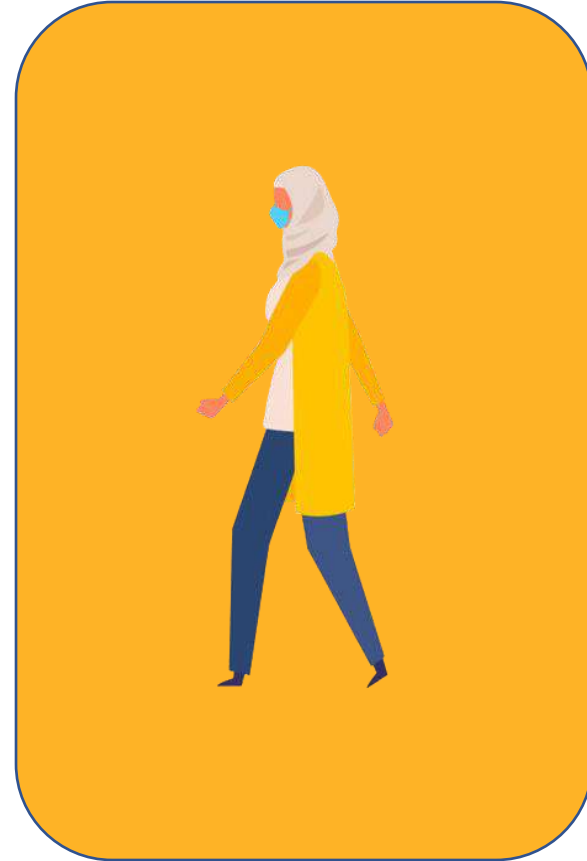
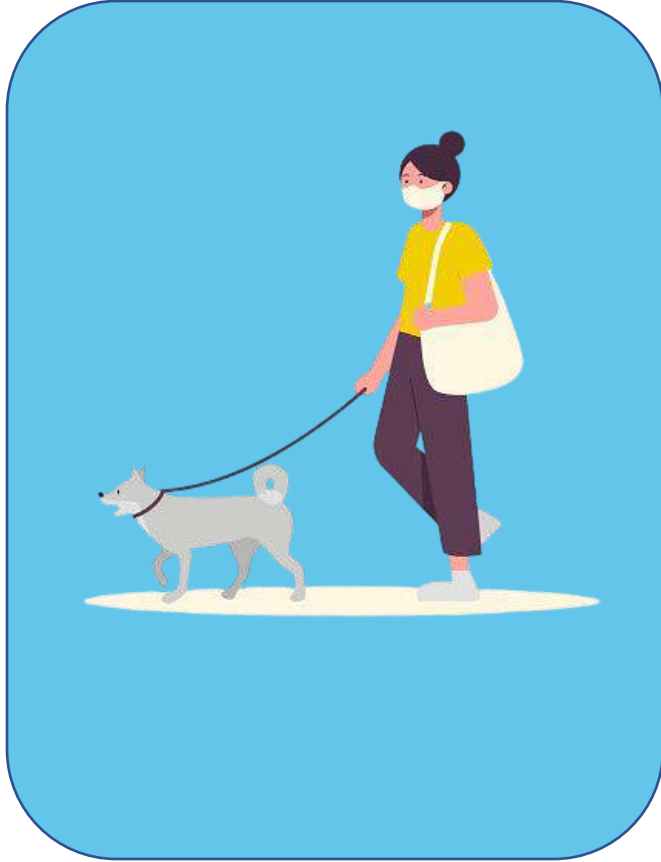


Walkable Cities





What is a Walkable City?

a city where it is easy to walk in, meaning the usage of a car is unnecessary to transport around the city; a vibrant city with many interactions

Health Benefit

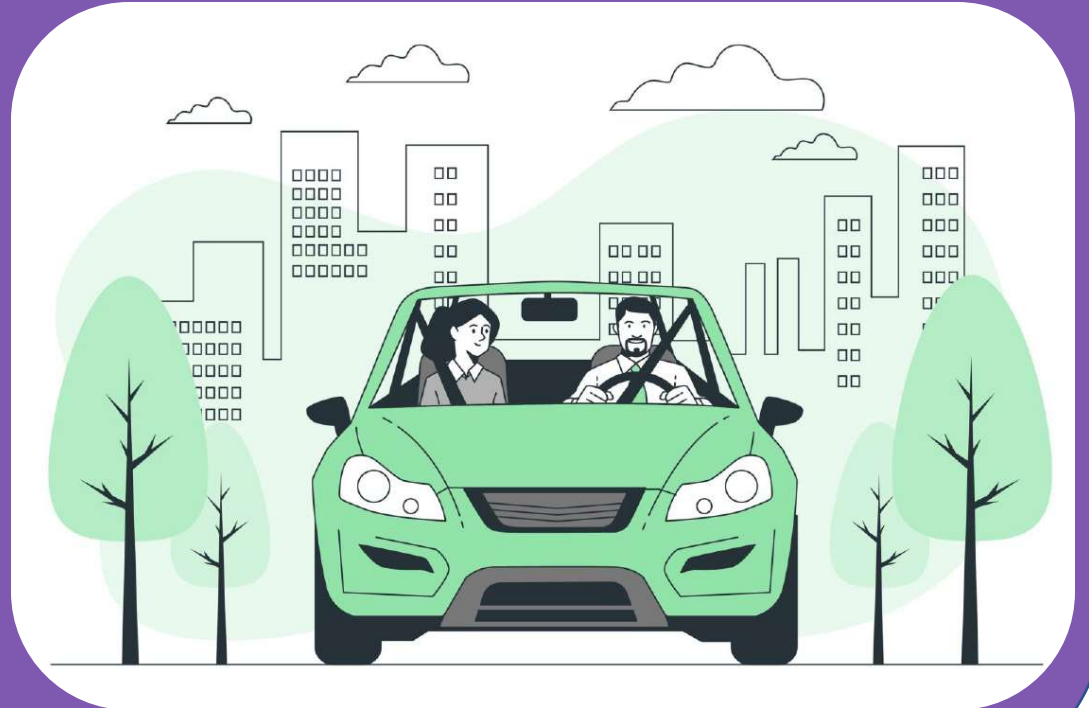
Aichi



What is a Walkable City? Health Benefit

It is statistically proven that drivers are about 40 to 50 percent more likely to be obese compared to people who transport otherwise

Aichi





What is a
Walkable City?
Health Benefit

Aichi

Roads were made for cars rather than for pedestrians and public transportations was poorly developed



Why walk?

Convenience

- Cheaper
- Closer
- For exercise



Cars

Multipurpose
unique buildings



Why walk?

Comfort

- Safe space
- Enjoy the way
- Connections



Cars

Multipurpose
unique buildings



Why walk?

Cars

- Pedestrian only zone
- Make parking expensive
- Create a bike lane



Multipurpose unique buildings



Why walk?

Cars

Multipurpose unique buildings

- Mixed-use
- Visually appealing
- Purpose to walk



Benefits

For People

improves happiness and mental health

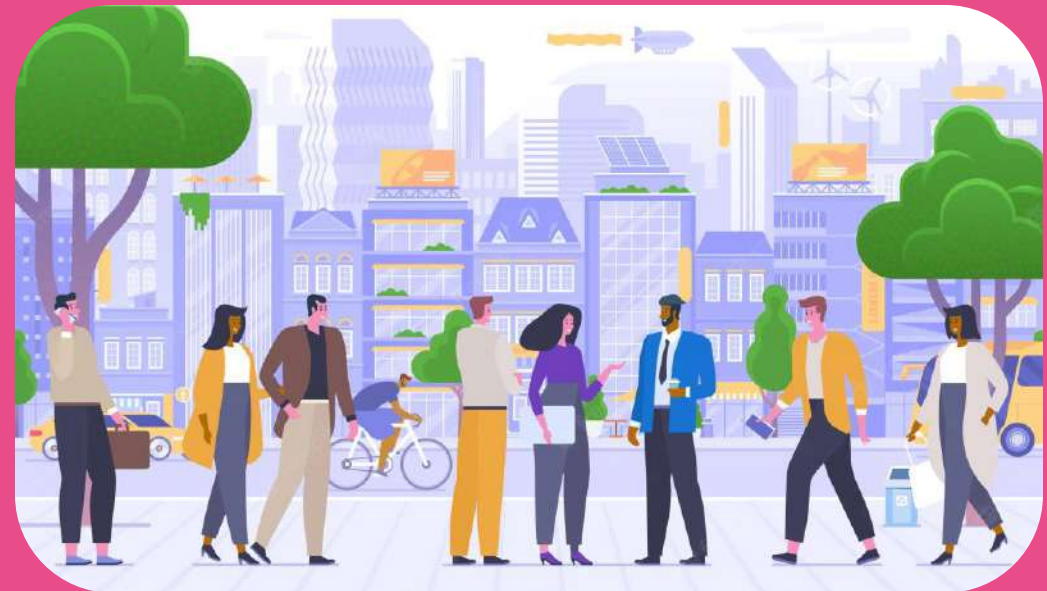
reduces obesity and other diseases

social interaction & reduces crime

For the

Environment

For the Economy



Benefits

For People

For the

Environment

Reduces air pollution, Zero carbon city,
Makes cities more beautiful, better use
of free space, reduces noise, alternative
transportation increases, water
management, vibrant urban experience

For the Economy



Benefits

For People

For the

Environment

For the Economy

Most affordable
transportation method,
Health cost, savings on
parking



Examples of Walkable Cities



Tokyo

- Details (reasons-why is the area city walkable)
- Supporting information
 - Explanation

Toyama City

Florence



Examples of Walkable Cities



Tokyo

Toyama City

A certified Japan's compact city
Holds a new plan for "The next stage of compact city"
Attempting at shaping a "zero carbon city"
Safety measures for pedestrians

Florence



Examples of Walkable Cities



Tokyo

Toyama City

Florence

Basilica of San Lorenzo

Piazza San Giovanni

Santa Maria del Fiore

Giotto's bell tower

Brunelleschi's dome



Examples of Walkable Cities



Tokyo

Toyama City

Florence

Basilica of San Lorenzo

Piazza San Giovanni

Santa Maria del Fiore

Giotto's bell tower

Brunelleschi's dome



Examples of Walkable Cities



Tokyo

Toyama City

Florence

Basilica of San Lorenzo

Piazza San Giovanni

Santa Maria del Fiore

Giotto's bell tower

Brunelleschi's dome



Examples of Walkable Cities



Tokyo

Toyama City

Florence

Basilica of San Lorenzo

Piazza San Giovanni

Santa Maria del Fiore

Giotto's bell tower

Brunelleschi's dome



Examples of Walkable Cities



Tokyo

Toyama City

Florence

Basilica of San Lorenzo

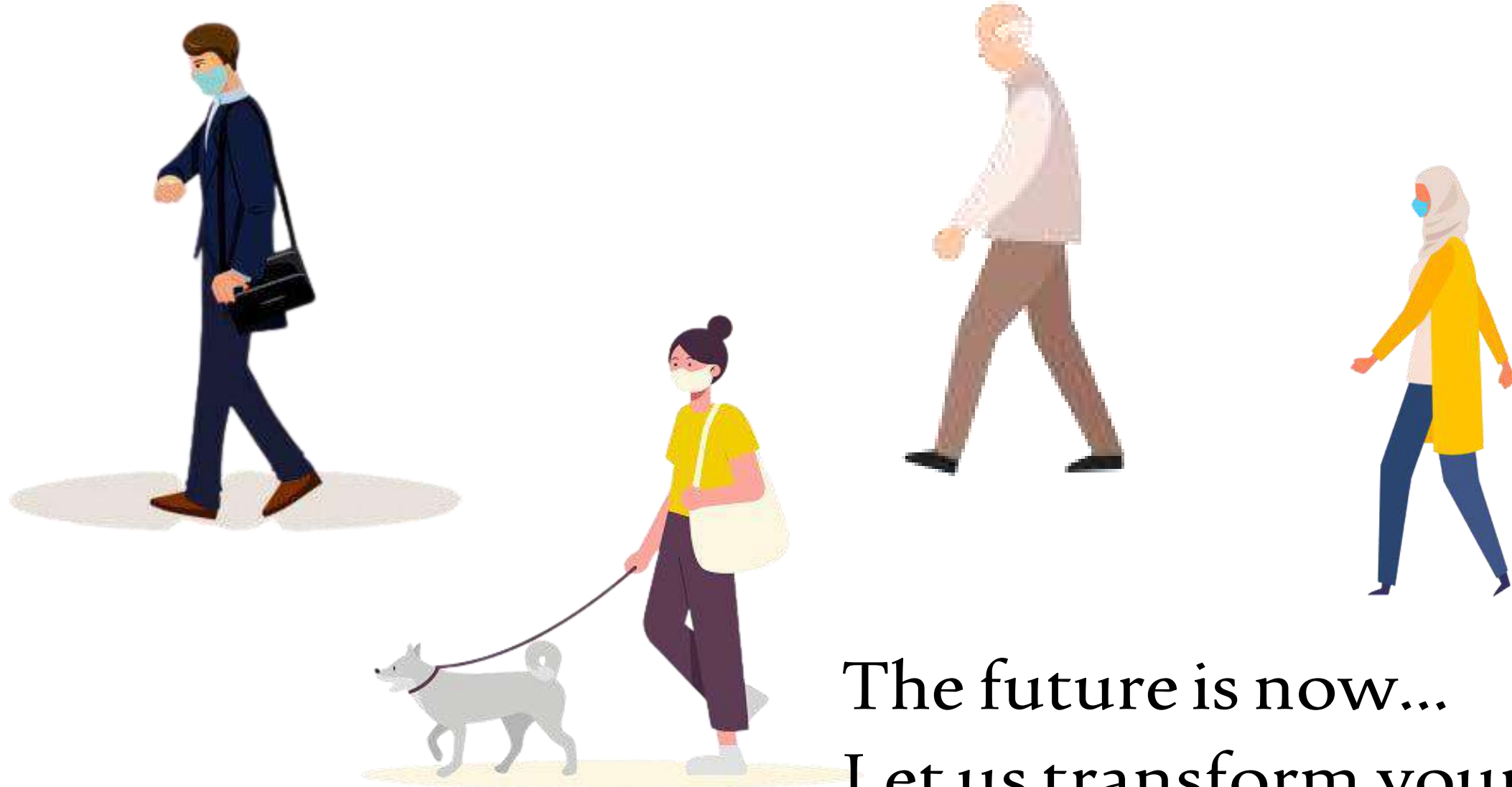
Piazza San Giovanni

Santa Maria del Fiore

Giotto's bell tower

Brunelleschi's dome





The future is now...
Let us transform your city
into a *walkable city*



Thank You