



Challenging the balance of the food production industry and our planet resources

Chigusa high school

Habitable land

- 77% occupied by meat industry



- 90% of deforestation can be traced back to same industry

Almost all of this land is used to make
food for animals

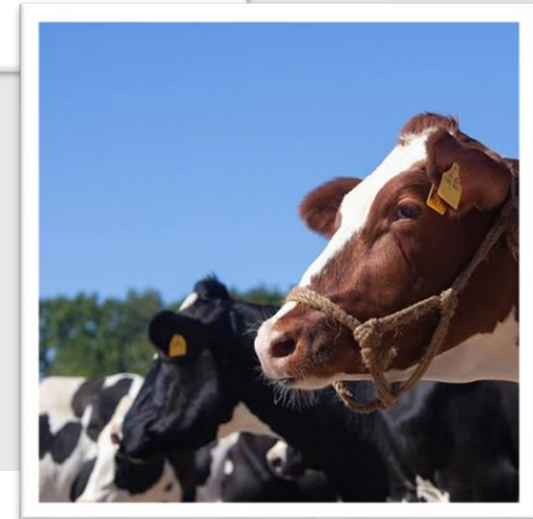
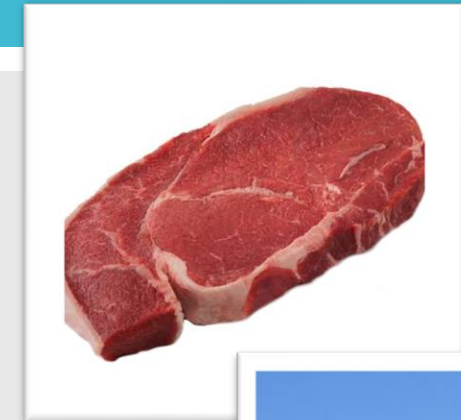


For example.....

Beef

- Water needed to produce 1 kilogram of beef

= 77 kilograms of tomatoes !







Gibier cuisine



Gibier utilization

	2016	2017	2018
Deers	10%	11%	13%
Wild boars	4%	5%	6%

MAFF of Japan

The percentage of the captured animals used for Gibier stays LOW.

Upsides to using Gibier meat

1. Conservation of natural resources
2. Less greenhouse gas emissions

Downsides and solutions

Downsides

- Image of not being safe
- Expensive

Solutions

- Traceability
- Governmental regulations
- Rise of its demands

Let's change
our
behaviors!

