

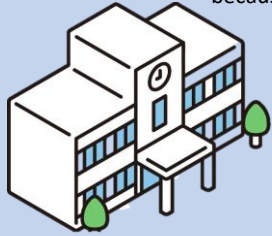
# Integration of Junior High School in Islands

~A case study of Himaka Island, Aichi Prefecture, Japan~

Meijo University Senior High School (SGHN063)

## Background and Purpose

**school integration** → some schools are combined into **one** because of a decreased number of students



-631 schols  
in 30 years

Depopulated areas tend to have stronger ties between the community and the junior high school.

The only junior high school on my island was closed March 2023

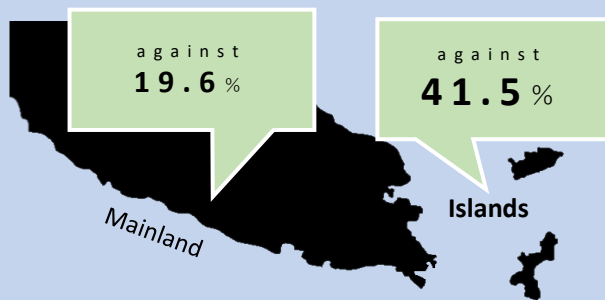
A lot of **opposition** from islanders

**Big impact** on the island

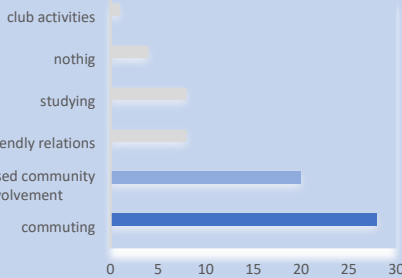
## Research Method and Result

【survey of parents at schools in Minamitita Town】

### For or against school integration



【Survey of Himaka Junior High School】



Students worry about...

lead to the decline of the island

school commute

### By ferry and bus

only one ferry every hour and it takes more than 40 minutes !



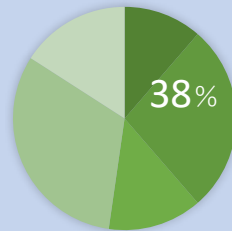
After integration

Fewer students worry about lead to the decline of the island

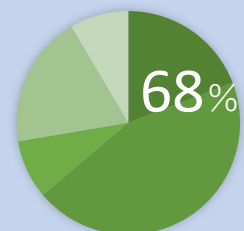
Measures are being taken to keep connections between the community and the school

### I'm glad we integrated the school

before the integration



after the integration



1:agree 2:somewhat agree 3:disagree 4:somewhat disagree 5:neither

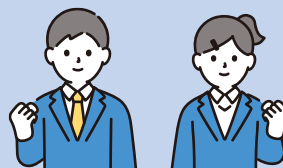
Many students were initially opposed to integration, but after integration, especially a lot of students are happy with the expansion of relationships.



## Conclusion

There might be a lot of opposition to the school integration from islanders because school integration will have a big impact on the islands.

Meeting new people and being able to do things that used to be limited!



Some issues to be improved, but many advantages to be seen

## References

屋敷 和佳 (2015). 「山間・過疎地域における学校維持と統廃合について」. 小口 功. 「過疎地における中学校の統廃合に関する考察」. 屋敷 和佳 (2014). 「小・中学統廃合の進捗と学校規模」. 南知多町教育委員会 (2022). 「中学校再編に向けての保護者意見交換会の概要」. [https://www.town.minamichita.lg.jp/\\_res/projects/default\\_project/\\_page\\_001/004/166/1124.pdf](https://www.town.minamichita.lg.jp/_res/projects/default_project/_page_001/004/166/1124.pdf) (閲覧日: 2022/12/2)